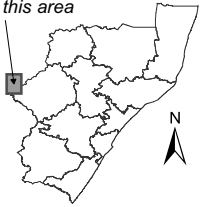


Map covers this area



- Legend**
- Schools
  - Hospitals
  - Clinics
  - P Police stations
  - Towns
  - District Municipalities
  - Local Municipalities
  - Urban areas
  - Nature reserves
  - National roads
  - Major rivers
  - Minor rivers
  - Dams / Lakes
  - Railways
  - Main roads
  - District roads
  - Local roads
  - Minor roads

Sponsored by: The KwaZulu-Natal Education Development Trust

Produced by:



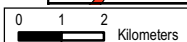
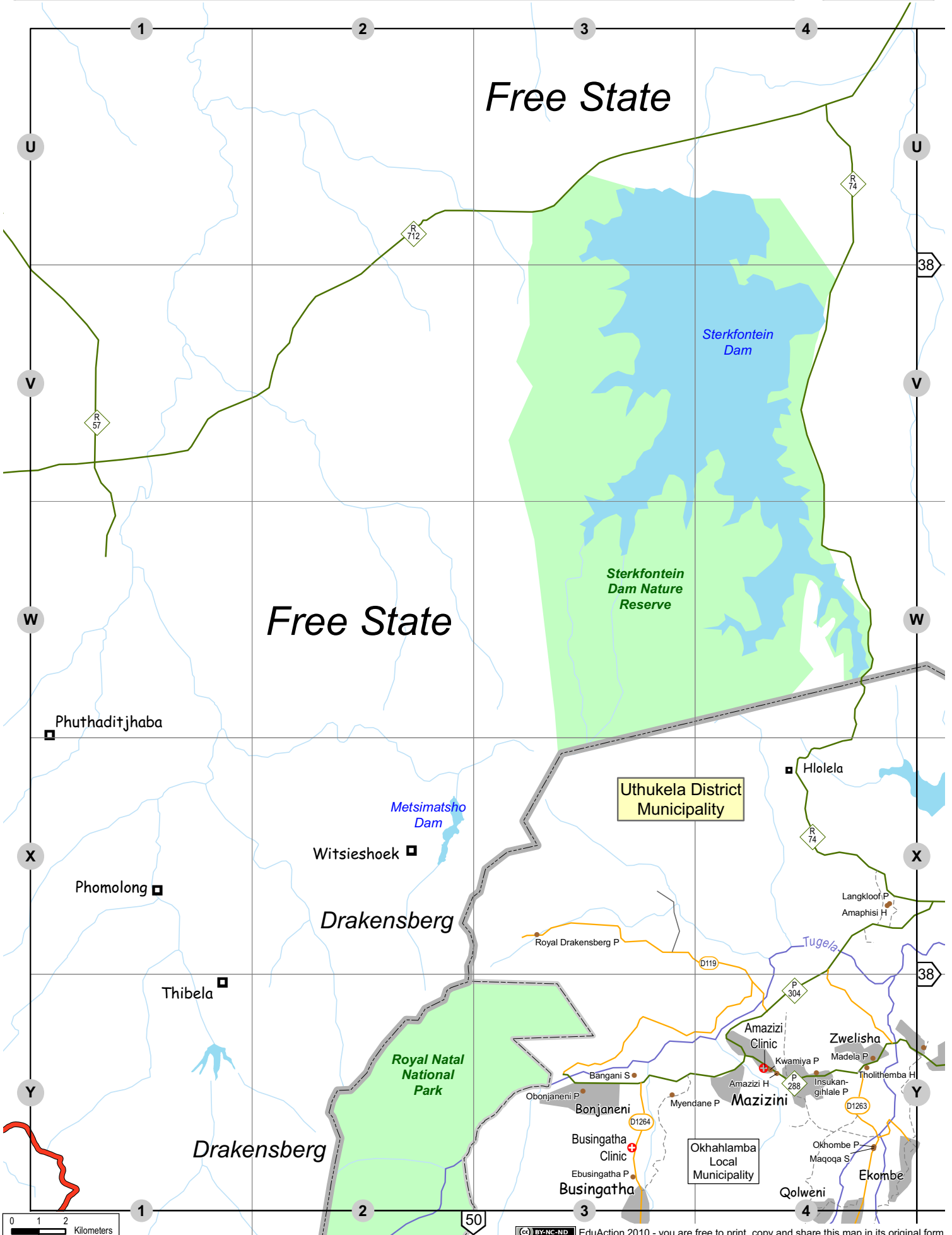
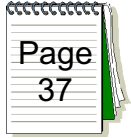
www.eduAction.co.za

Supported by:



KwaZulu-Natal Dept of Education

KwaZulu-Natal Schools Field Guide v5



# Index to Schools, Health Facilities and Towns on Page 37

## Schools

SCHOOL	EMIS	PG	GRID	DISTRICT	CIRCUIT	SCHOOL	EMIS	PG	GRID	DISTRICT	CIRCUIT
Amaphisi H	102379	37	X 4	Othukela	Bergville	Amazizi H	103008	37	Y 4	Othukela	Bergville
Bangani S	105228	37	Y 3	Othukela	Bergville	Ebusingatha P	126503	37	Y 3	Othukela	Bergville
Insukangihlale P	165834	37	Y 4	Othukela	Bergville	Kwamiya P	181189	37	Y 4	Othukela	Bergville
Langkloof P	185592	37	X 4	Othukela	Bergville	Madela P	190994	37	Y 4	Othukela	Bergville
Maqoqa S	198949	37	Y 4	Othukela	Bergville	Myendane P	343878	37	Y 3	Othukela	Bergville
Obonjaneni P	242424	37	Y 3	Othukela	Bergville	Okhombe P	243460	37	Y 4	Othukela	Bergville
Royal Drakensberg P	444074	37	X 3	Othukela	Bergville	Tholithemba H	282754	37	Y 4	Othukela	Bergville

## Health Facilities

HEALTH FACILITY	TYPE	AUTHORITY	PG	GRID	DISTRICT	HEALTH FACILITY	TYPE	AUTHORITY	PG	GRID	DISTRICT
Amazizi Clinic	Clinic	Provincial	37	Y 4	Othukela	Busingatha Clinic	Clinic	Provincial	37	Y 3	Othukela

## Towns and Settlements

TOWN	PG	GRID	DISTRICT	LOCAL MUNICIPALITY	TOWN	PG	GRID	DISTRICT	LOCAL MUNICIPALITY
Bonjaneni	37	Y 3	Othukela	Okhahlamba	Busingatha	37	Y 3	Othukela	Okhahlamba
Hlolela	37	X 4	Othukela	Okhahlamba	Mazizini	37	Y 4	Othukela	Okhahlamba
Zwelisha	37	Y 4	Othukela	Okhahlamba					